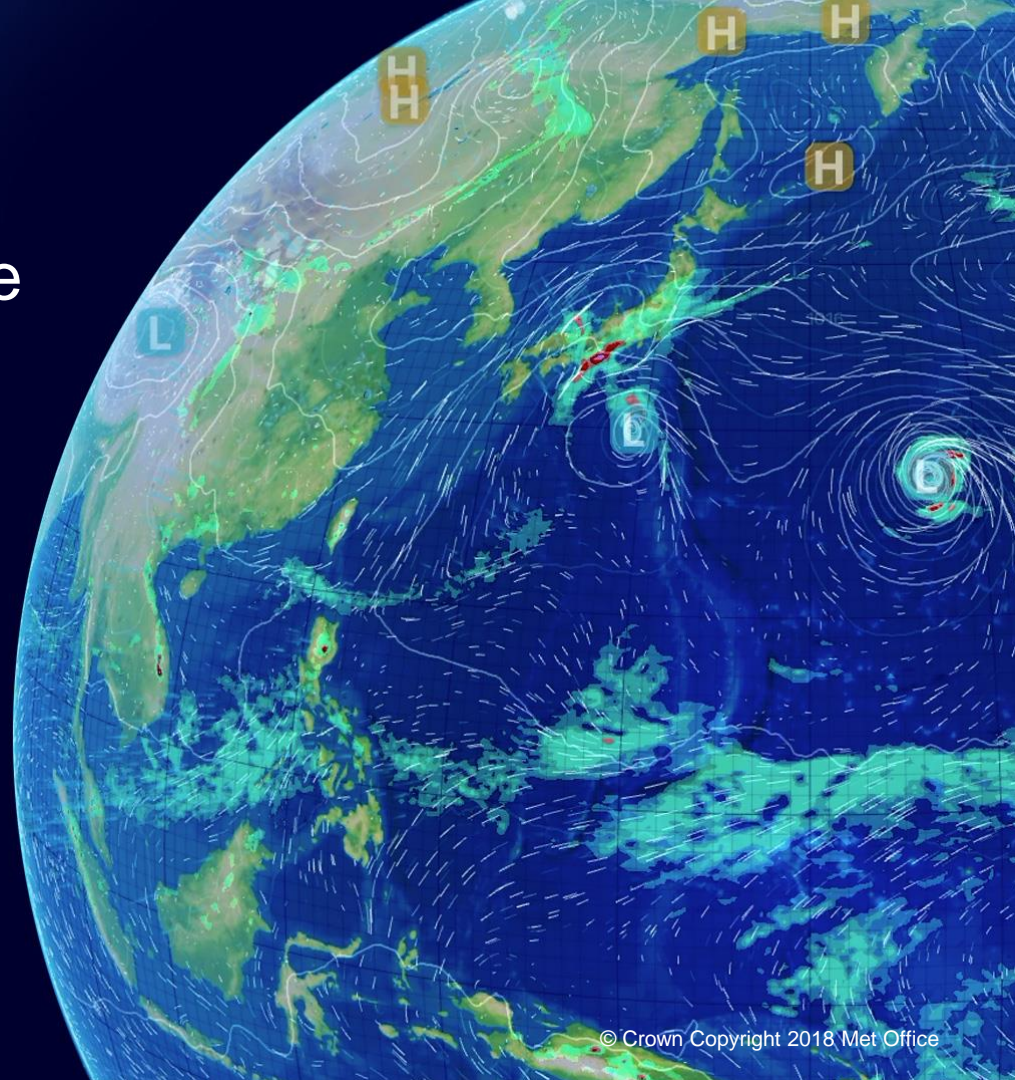
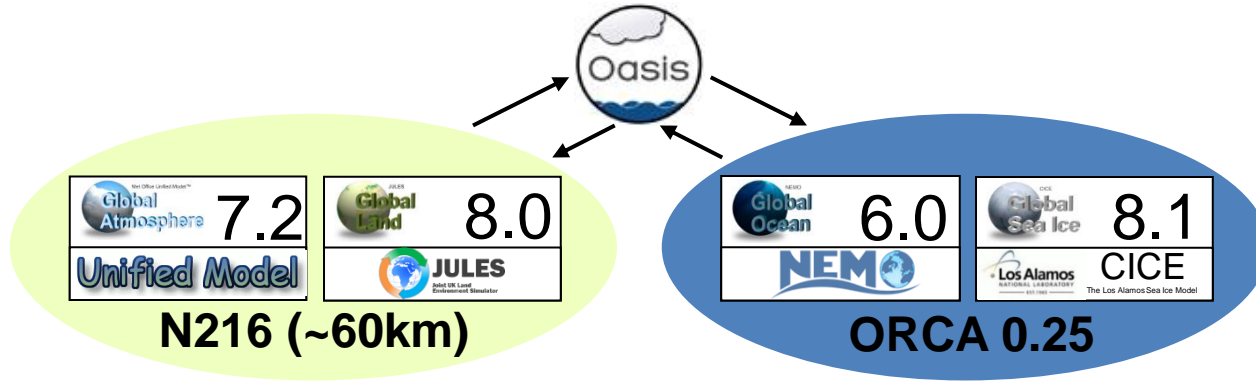


UK Met Office Hadley Centre Seasonal Predictions

Prof Adam Scaife and Dr Philip Bett



Met Office GloSea prediction system



Fully coupled model (Atmosphere-Land-Ocean-Sea Ice)

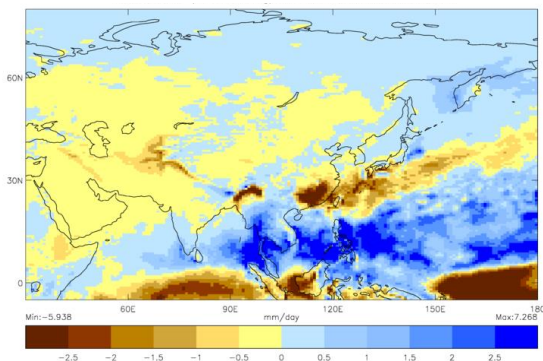
High ocean + atmosphere resolution

Coupled sea ice and well resolved stratosphere

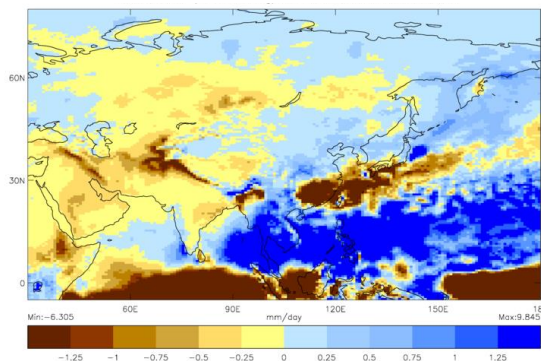
Used across timescales: monthly->seasonal

GloSea6 Rainfall Forecasts for APRIL

From *early* March



From *late* March

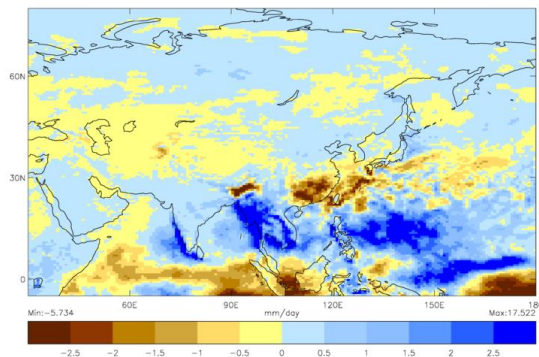


Persistent signals for low rainfall over SE China mainland and Taiwan

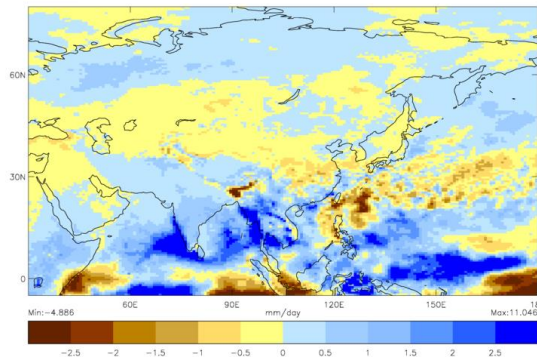
Agrees with recent reports of low rainfall and persistent drought

GloSea6 Rainfall Forecasts for MAY

2 WEEKS AGO



LATEST



Continued signal for low rainfall around Taiwan

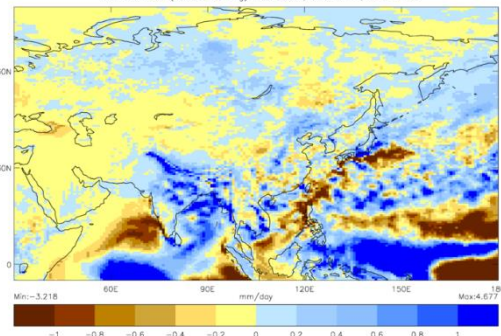
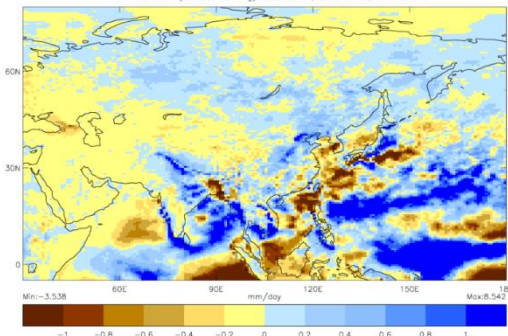
Dry signal over SE China decreasing

Wet signal to South and West over India, Myanmar, Thailand and parts of Philippines

GloSea6 Rainfall Forecasts for JJA

2 WEEKS AGO

LATEST



Wet over N & E India

Continued signal for dry around Taiwan

Weak signals over SE China

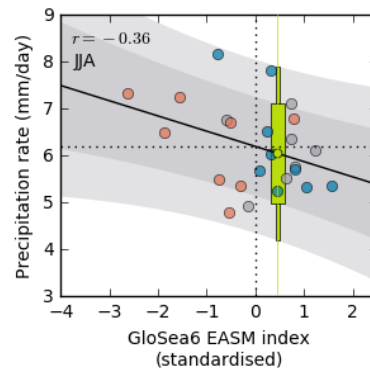
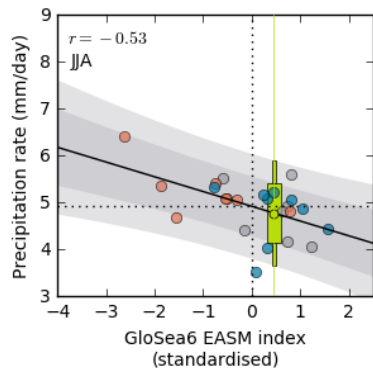
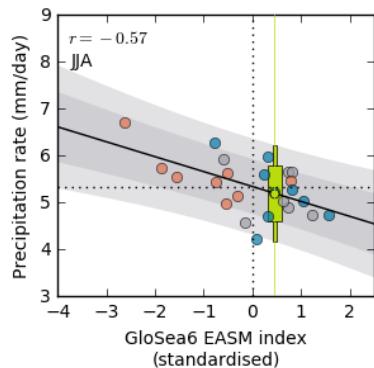
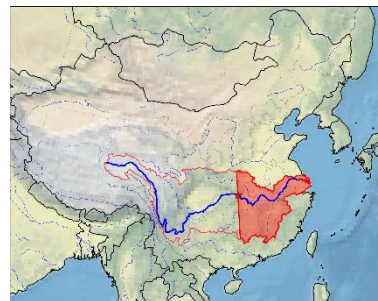
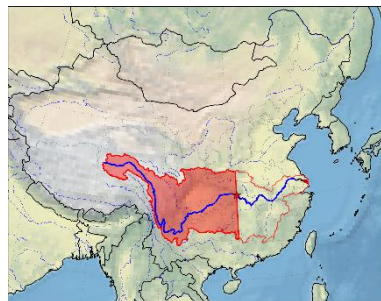
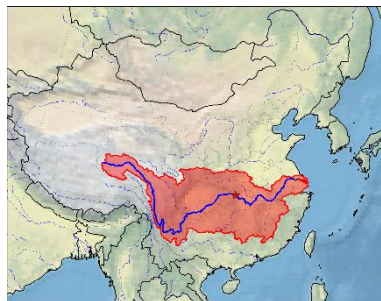
EASM forecasts

Early signals in March and April for moderately positive EASM index
and slightly weakened WPSH

Forecast signals reduced during April...

Latest forecast from May for slightly negative EASM index and
slightly strengthened WPSH

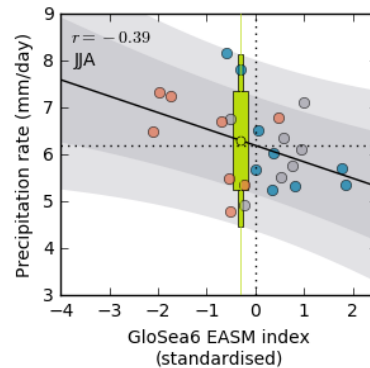
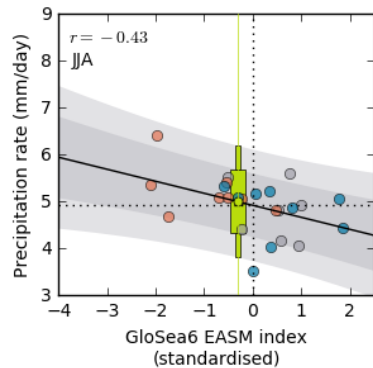
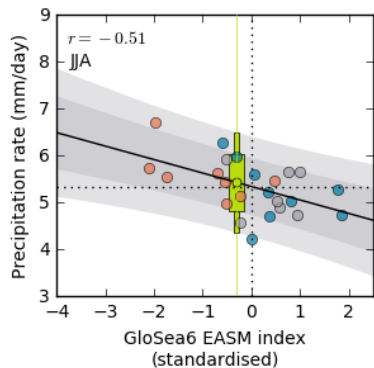
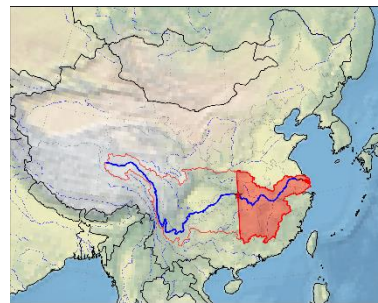
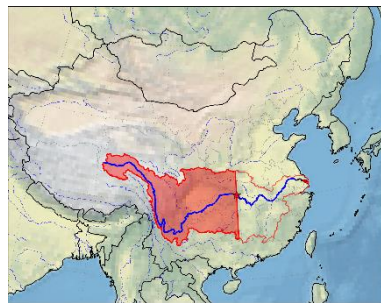
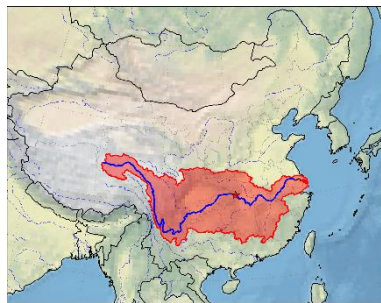
Yangtze Basin forecasts for JJA from April



Whole, upper and lower basin forecasts

Indicated dry in all regions from April

Yangtze Basin forecasts for JJA from May



Whole, upper and lower basin forecasts

Indicating close to neutral from May