

Introduction of the Efforts to Promote Use of Climate Prediction in JMA

Nobuyuki Kayaba

Climate Prediction Division,
the Atmosphere and Marine Department,
Japan Meteorological Agency

9th May 2022 , FOCRAII

Outline

- 1 . Introduction and motivations
- 2 . The Efforts to Promote Use of Climate Prediction Dialogue & Sharing knowledge (recent case)
- 3 . Summary

Introduction and motivations

JMA expects its climate prediction to be used practically at some industrial fields for **assessment** of the influence of extreme weather and climate for the **adaptation**.



Climate risk management process

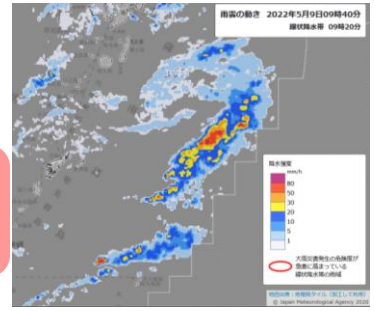
~ JMA Weather/Climate Prediction ~

Today Tomorrow One week One month Three month



Nowcasts

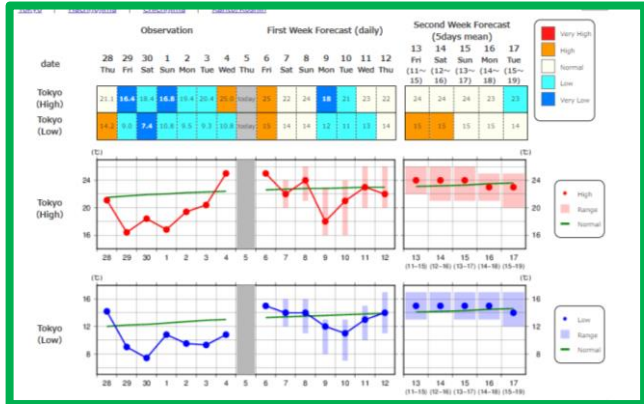
Warnings/
Advisories



JMA forecasting services cover a wide range of meteorological information.

Weather forecasts

One-week forecasts



- Two-week temperature forecasts
- Early warning information on extreme weather

One-month forecasts



Seasonal forecasts/
El Niño outlook

Two-week temperature forecasts

~ Background ~

We have promoted the utilization of climate prediction against a backdrop of Global Framework for Climate Services (GFCS) by WMO.

So, we have taken activities to develop best practices of the use of climate prediction in collaboration with user-sector organizations (e.g. Agriculture, Apparel, Beverage industry) since 2011.

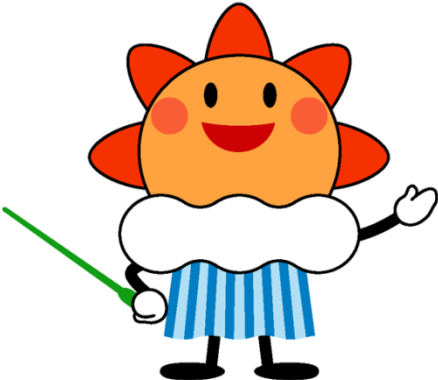
Success stories from our efforts so far include local agricultural organizations benefiting from two-week temperature forecast, for purposes of fruit flowering date prediction and pest outbreak prediction.

Recently, we also promote the utilization of seasonal (long-range) forecast and time seamlessly by “Dialogue & Sharing knowledge”.

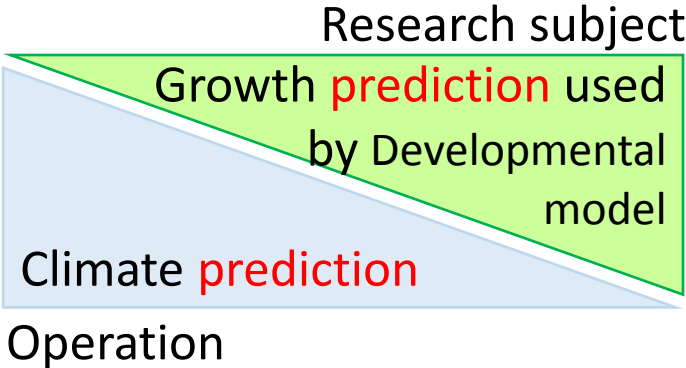


Dialogue & Sharing knowledge (recent case 1)

We start **cooperative research** at Pilot Project to develop best practices of the use of seasonal forecast from 2022 to 2025



JMA
Provider



NARO
User/Intermediary
Agricultural
Research Institute



NARO: The National Agriculture and Food Research Organization

Dialogue & Sharing knowledge (recent case 2)

- As a strategy for promoting use of long-range forecasts in wider industries, JMA gives online discussion sessions on 3-month forecast just after the issuance.
- The target audience is certificated forecasters working for commercial weather services.
- Our expectation is that this improves forecaster's literacy for climate forecasts (basically they are trained for short-range forecasts) and eventually helps climate services flourish.

JMA



private
weather
forecasters

Summary

2-week temperature forecast is increasingly put to practical use in Japan.

We recently began efforts to promote the utilization of seasonal forecast and time seamlessly by two plans.

- **Cooperative research**
with agricultural research institute (NARO)
- **Dialogue and discussion on long-range forecasts**
for private weather forecasters

The result will be several years later!